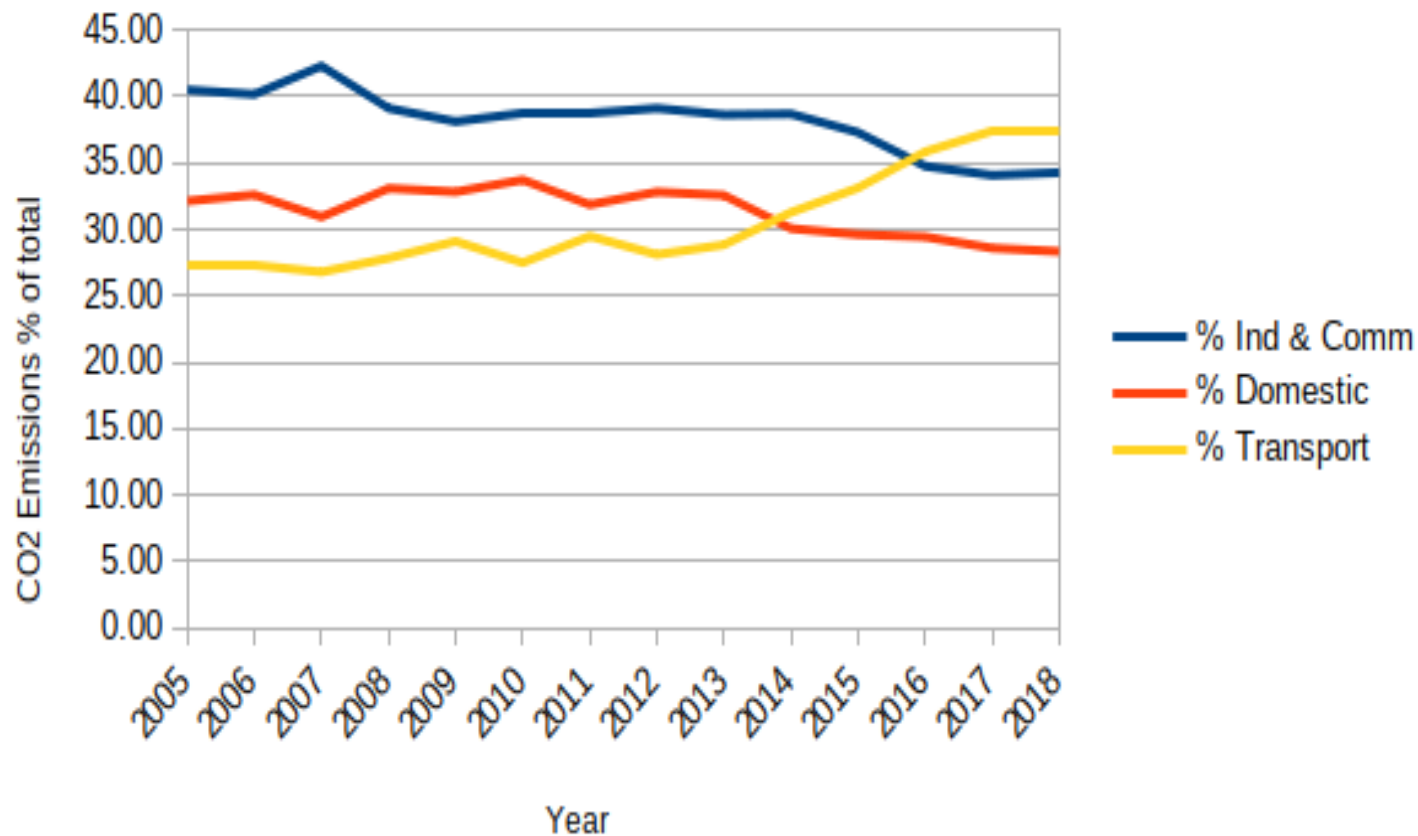




Transport and Climate Change
by
John Whitelegg

Shropshire CO2 emissions % of Total (Subset Dataset)



UK greenhouse gas emissions by sector, 2017

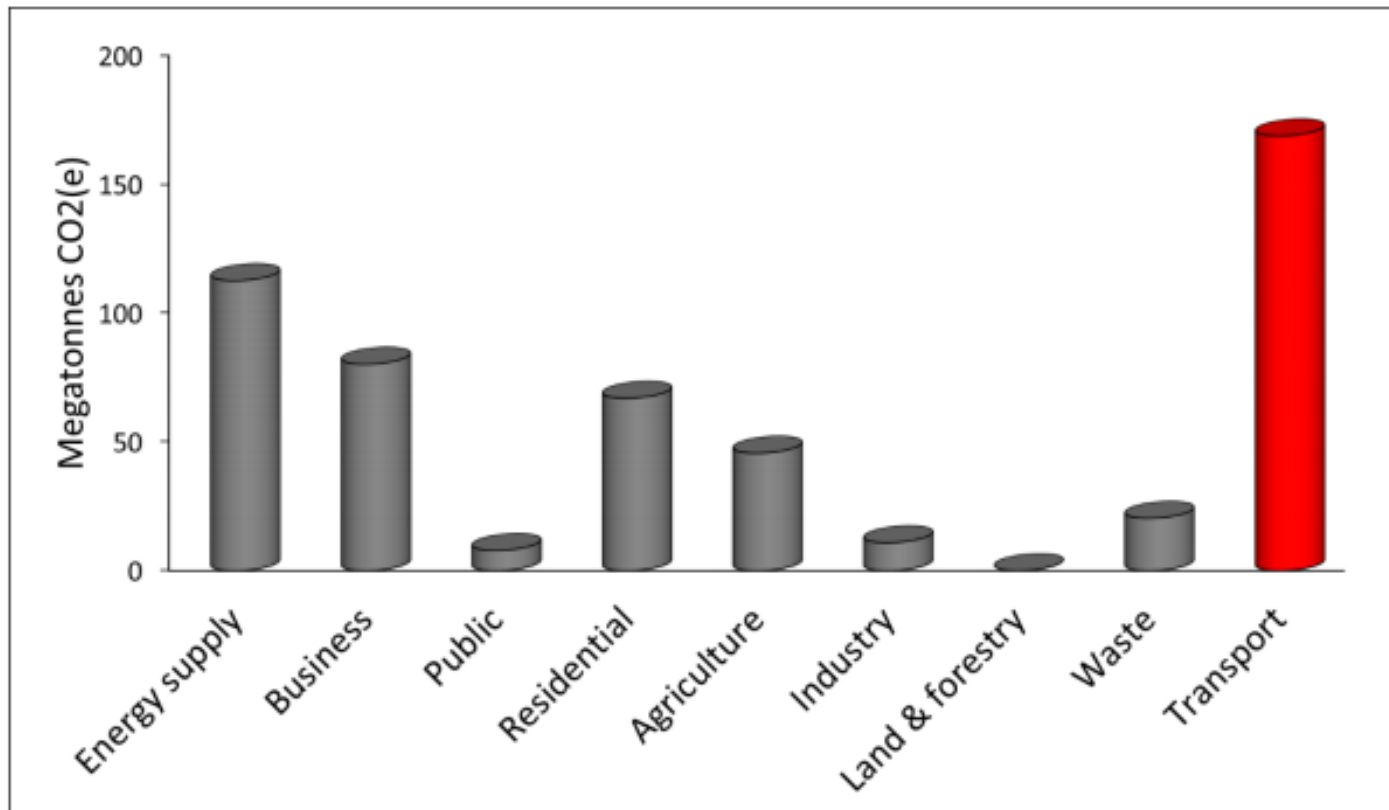


Figure 1: UK domestic transport greenhouse gas emissions in 2016⁵

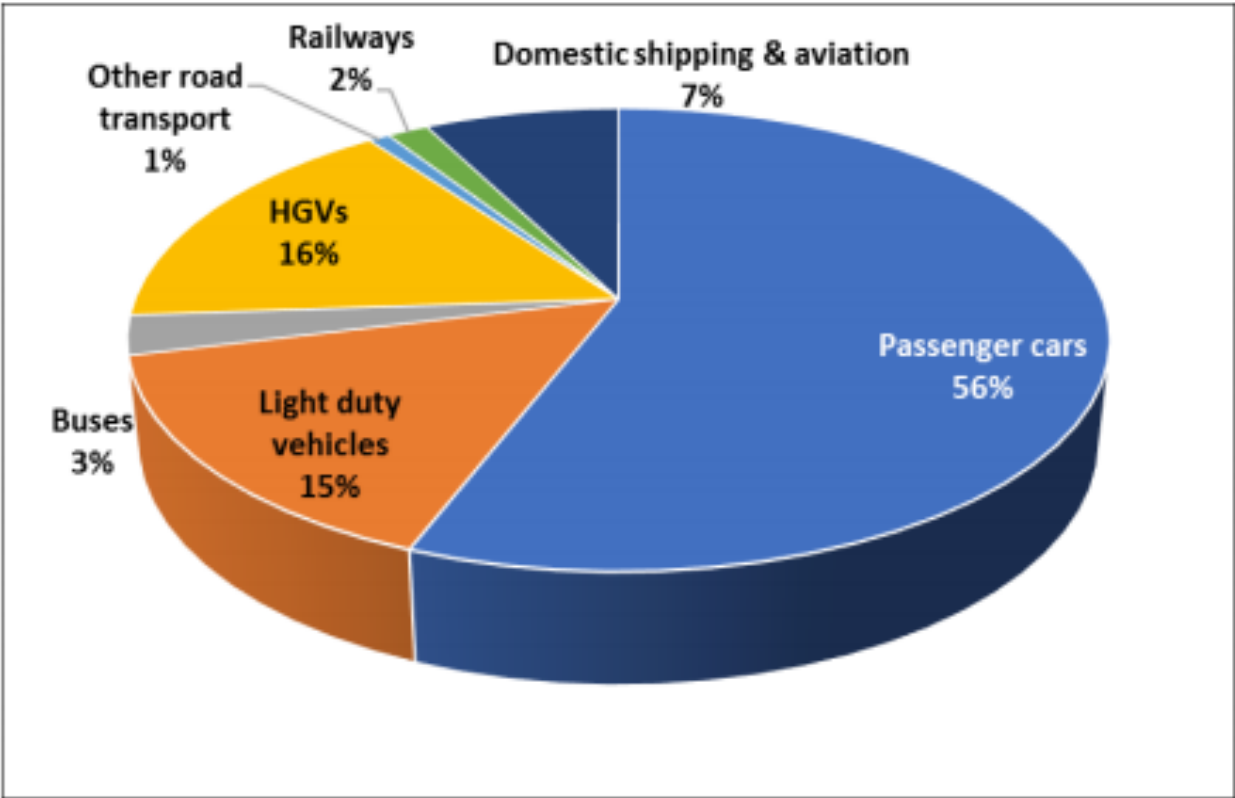
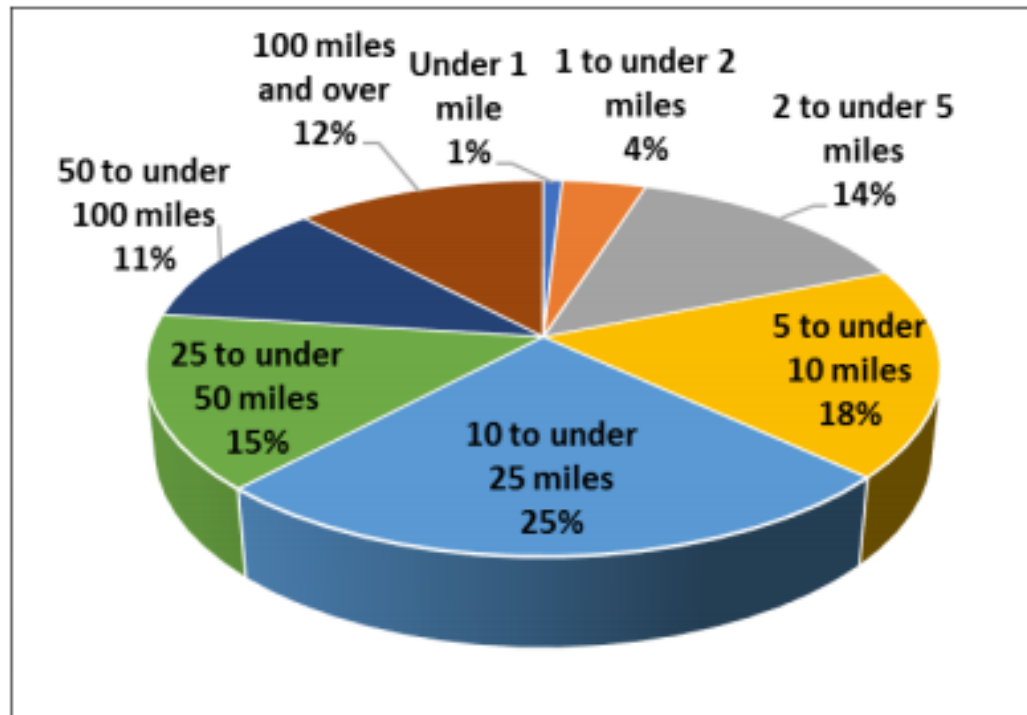
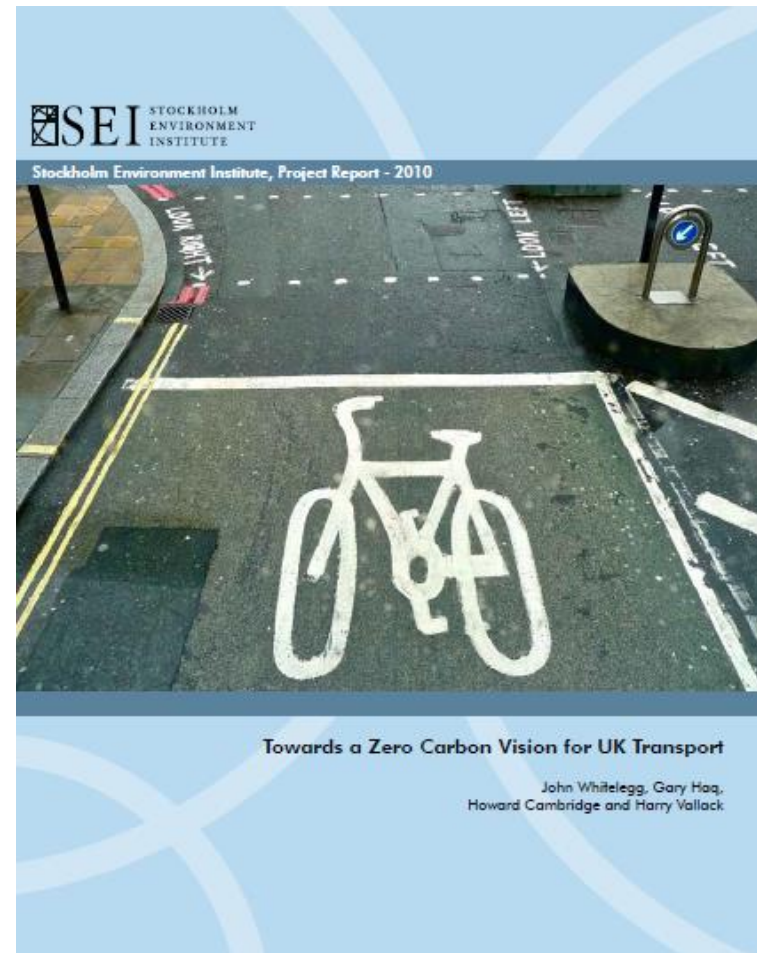
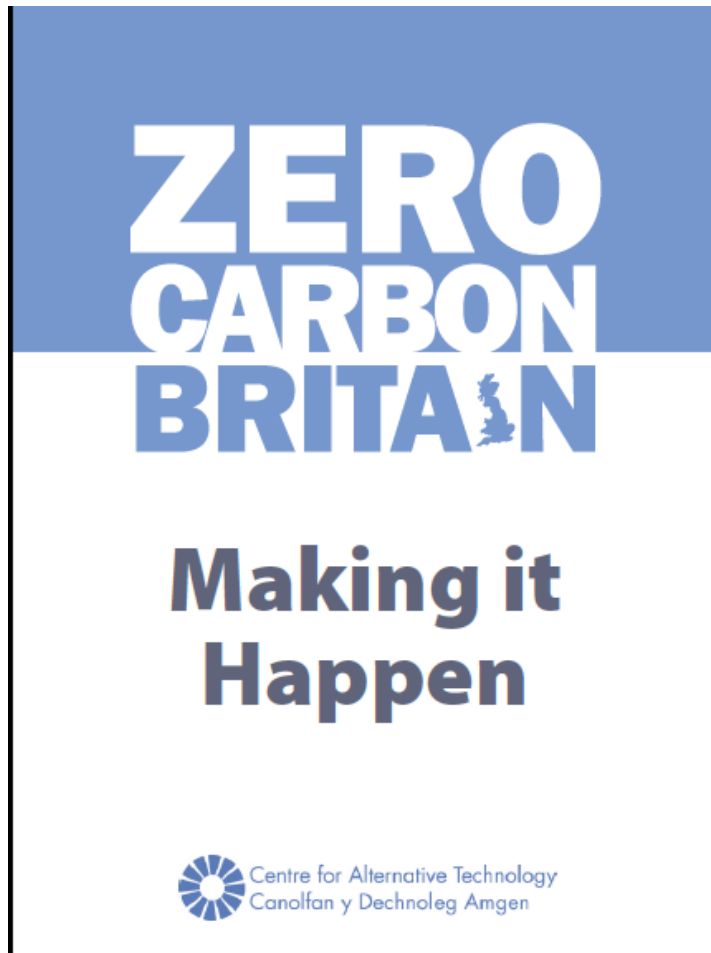


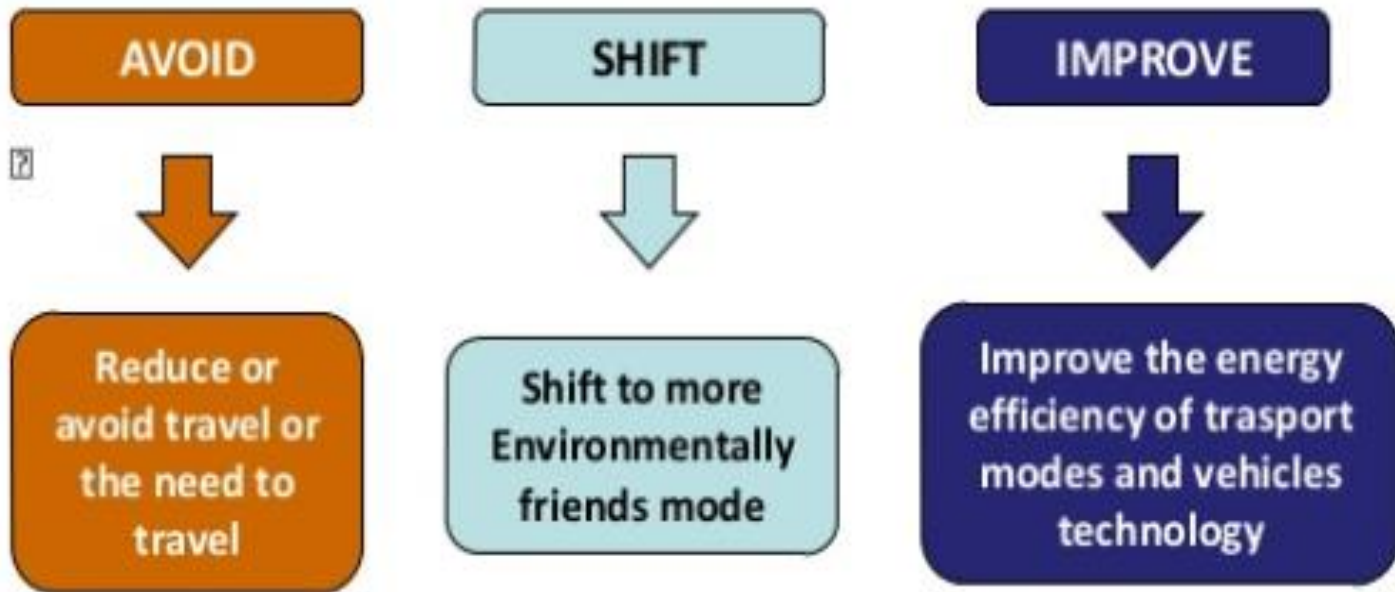
Figure 2: Estimated CO₂ emissions from cars by journey distance¹¹⁰



Zero Carbon



There are three primary ways to reduce greenhouse gas emissions from transport:



Sweden: applies to large rural areas,
small towns and villages



Walking, cycling and public transport have been and are prioritised, making it possible to achieve a sustainable transport system

Applied in the Lund Municipality, 70% of all travel is intended to be by public transport, walking or cycling by 2020, and 75 % by 2030

The Swedish approach

- We will lead the world
- It makes economic sense
- New business opportunities/green jobs/avoid huge costs associated with “not doing it”
- Contributes to fairness, social progress and public health

We can do it

- The Swedes are smart but so are we
- We discuss how to do it and who will do it in the transport breakout session this afternoon